



POTSDAMER 72

RESIDENCES  
PENTHOUSES





There is a wide variety of restaurants within walking distance, like for example the renowned Café Einstein, with its stylish ambience. More and more well-known galleries have taken up residence in this area, making it Berlin's new gallery mile. Potsdamer Straße is therefore increasingly becoming one of the most popular residential and business addresses in Berlin. Various fashion labels and notable companies use this exclusive central location as their distinguished business address. All of this suggests further appreciation of the property.

## Outstanding Location between KaDeWe and Potsdamer Platz

The residential building Potsdamer Straße 72 is conveniently located in the heart of the city, near Tiergarten park, only a few steps from the New National Gallery, the Philharmonie, as well as Berlin's new centre, Potsdamer Platz.

Furthermore, the famous KaDeWe department store, the Brandenburg Gate and the Reichstag are within close proximity.



PENTHOUSE  
A



PENTHOUSE  
A



PENTHOUSE

A



PENTHOUSE  
A





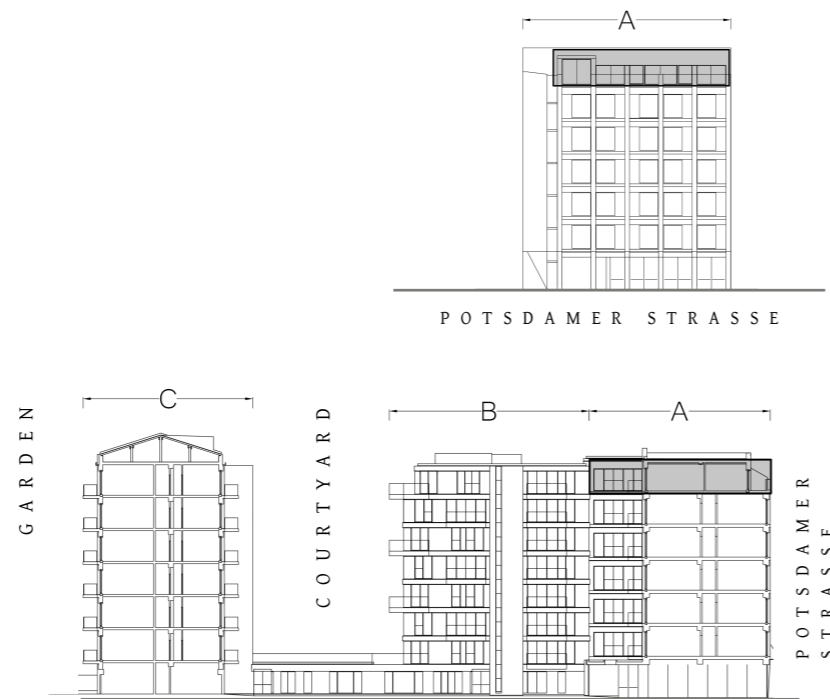
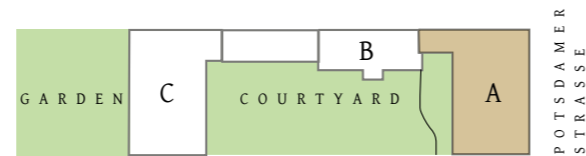
PENTHOUSE

A



PENTHOUSE

**A** 6.Floor



Hall	8,12 m <sup>2</sup>
Kitchen/Dining Room/Living Room	112,56 m <sup>2</sup>
Room 1	7,66 m <sup>2</sup>
Room 2	15,17 m <sup>2</sup>
Room 3	15,09 m <sup>2</sup>
Room 4	15,19 m <sup>2</sup>
Room 5	12,45 m <sup>2</sup>
Bathroom/WC 1	3,35 m <sup>2</sup>
Bathroom/WC 2	3,99 m <sup>2</sup>
Bathroom/WC 3	3,99 m <sup>2</sup>
Bathroom/WC 4	4,13 m <sup>2</sup>
Patio	7,33 m <sup>2</sup>
Corridor 1	2,56 m <sup>2</sup>
Corridor 2	3,38 m <sup>2</sup>
Corridor 3	3,35 m <sup>2</sup>
Corridor 4	2,72 m <sup>2</sup>
Terrace (30,18 m <sup>2</sup> (50%))	15,09 m <sup>2</sup>
Balcony 1 (8,03 m <sup>2</sup> (50%))	2,42 m <sup>2</sup>
Balcony 2 (4,83 m <sup>2</sup> (50%))	2,53 m <sup>2</sup>

**Penthouse Total 238,61 m<sup>2</sup>**

PENTHOUSE C



PENTHOUSE C



PENTHOUSE C



PENTHOUSE C



PENTHOUSE C



PENTHOUSE C

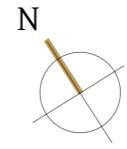
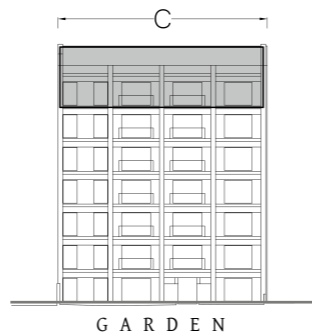
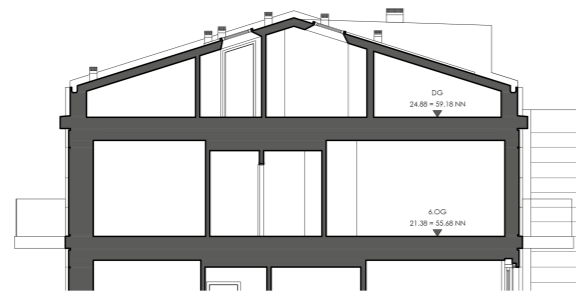
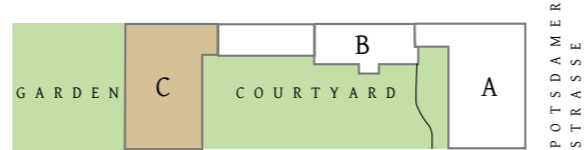




PENTHOUSE



6. Floor



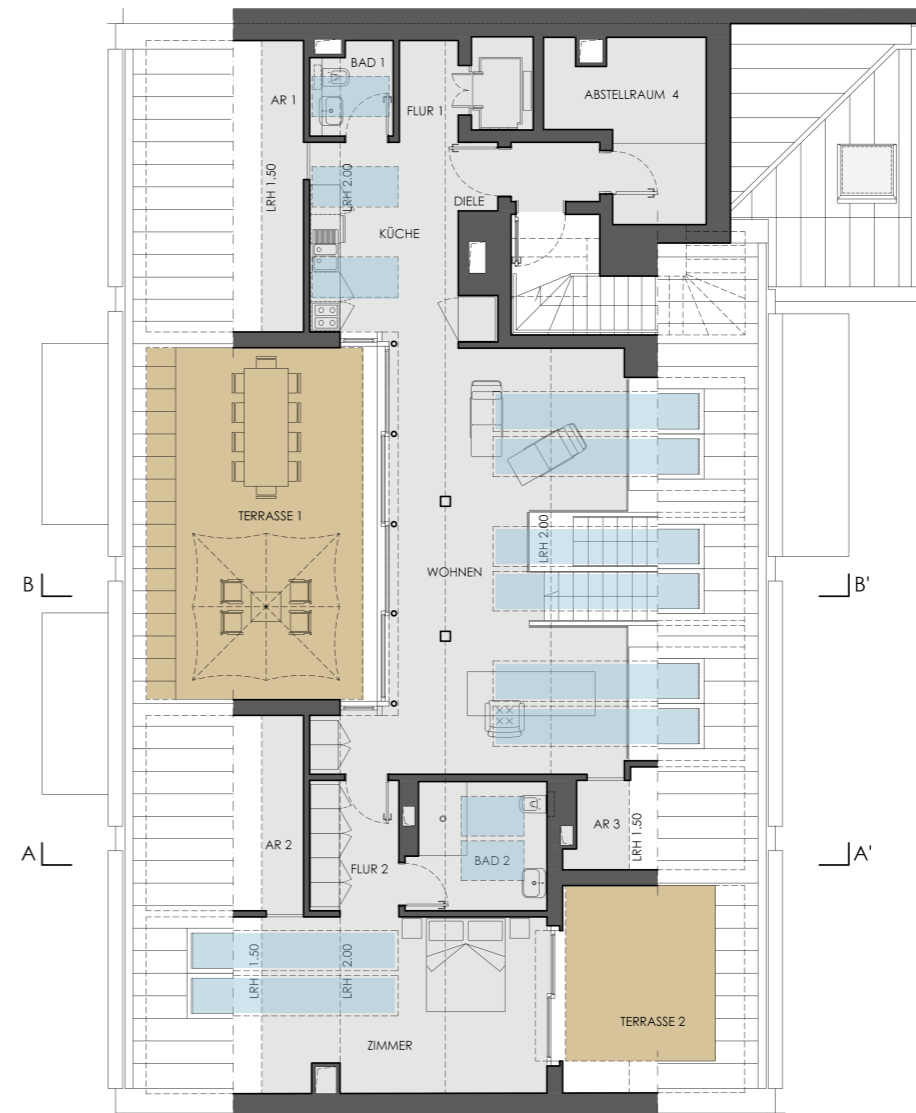
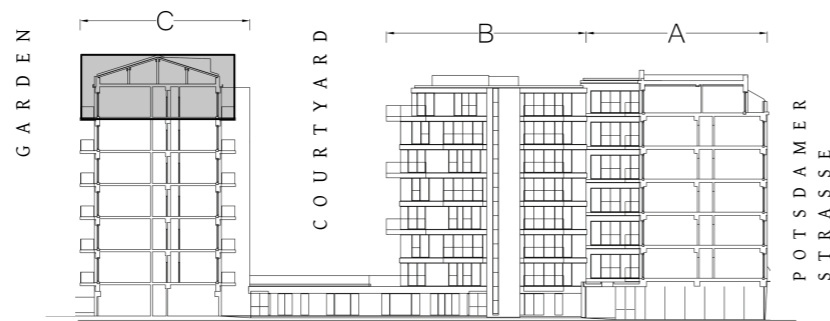
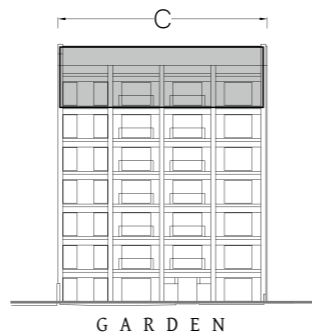
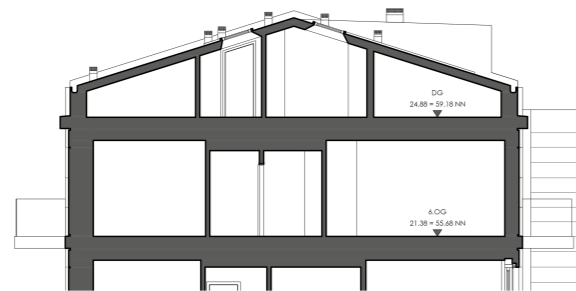
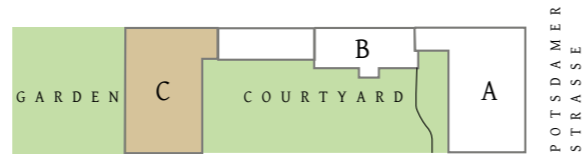
Hall	12,67 m <sup>2</sup>
Kitchen/Dining Room/	107,11 m <sup>2</sup>
Living Room	
Room 1	25,52 m <sup>2</sup>
Room 2	23,07 m <sup>2</sup>
Room 3	22,12 m <sup>2</sup>
Bathroom/WC 1	5,43 m <sup>2</sup>
Bathroom/WC 2	5,08 m <sup>2</sup>
Bathroom/WC 3	3,31 m <sup>2</sup>
Bathroom/WC 4	5,43 m <sup>2</sup>
Corridor 1	4,63 m <sup>2</sup>
HWR	2,51 m <sup>2</sup>
Balcony 1 (8,03 m <sup>2</sup> (50%))	4,02 m <sup>2</sup>
Balcony 2 (6,09 m <sup>2</sup> (50%))	3,05 m <sup>2</sup>
Balcony 3 (6,09 m <sup>2</sup> (50%))	3,05 m <sup>2</sup>

6. Floor Total 227,00 m<sup>2</sup>

Penthouse Total 343,79 m<sup>2</sup>

PENTHOUSE

C Attic



Living Room	34,38 m <sup>2</sup>
Kitchen	12,74 m <sup>2</sup>
Room	17,88 m <sup>2</sup>
Bathroom/WC 1	2,58 m <sup>2</sup>
Bathroom/WC 2	7,21 m <sup>2</sup>
Floor 1	2,49 m <sup>2</sup>
Floor 2	4,17 m <sup>2</sup>
Closet 1	2,54 m <sup>2</sup>
Closet 2	1,70 m <sup>2</sup>
Closet 3	1,18 m <sup>2</sup>
Closet 4	9,57 m <sup>2</sup>

Terrace 1 (29,54 m <sup>2</sup> (50%))	14,77 m <sup>2</sup>
Terrace 2 (11,15 m <sup>2</sup> (50%))	5,58 m <sup>2</sup>

Attic Total	116,79 m <sup>2</sup>
-------------	-----------------------

**Penthouse Total 343,79 m<sup>2</sup>**

BATH ROOMS



BATH ROOMS



BATH ROOMS



BATH ROOMS



BATH ROOMS



BATH ROOMS

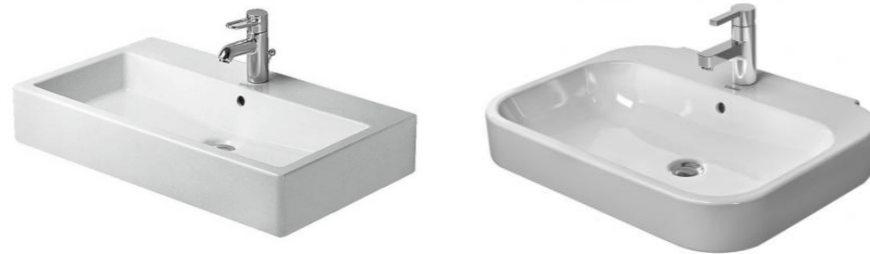




## FEATURES

### Washbasin

Manufacturer: Duravit  
Series: Vero oder Happy D.2  
or similar  
Dimension:  
Vero 50/80 x 47 cm,  
Happy D.2 50 x 36 cm,  
60 x 47,5 cm, 65 x 49,5 cm.



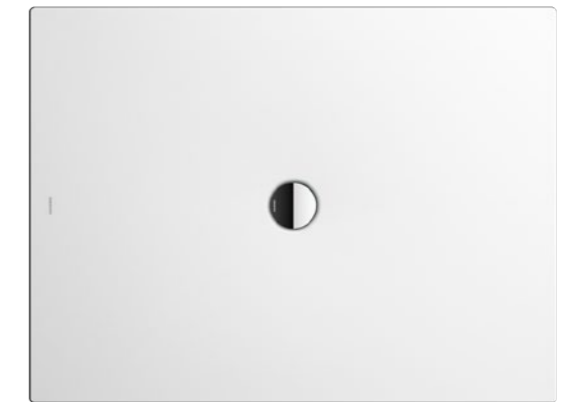
### WC

Manufacturer: Duravit  
Series: Vero, Happy D.2  
or 2nd Floor



### Shower tray

Manufacturer: Kaldewei  
Model: Scona oder ähnlich  
Dimension: 80 x 80/100 cm,  
or to fit



### Bathtub

Manufacturer: Kaldewei  
Model: Classic Duo or similar  
Dimension:  
170 x 70 cm, 170 x 75 cm,  
180 x 80 cm



Bathroom fittings  
Manufacturer: Grohet  
Model: Eurocube  
or Eurostyle Cosmopolitan



Basin mixer



Shower



WC-Push plate  
Manufacturer: Geberit  
Model: Sigma 20

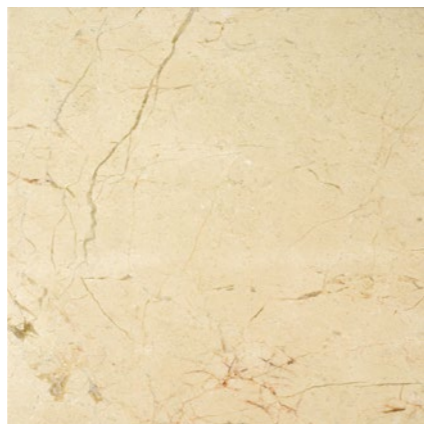


**Tiles**

Natural Stone or Marble

Choice: Carrara Crema marfil

Format fit to measures of the bathrooms  
stones and marbles are variable  
in tone and veins



**Parquet**

Manufacturer: IPF PARQUET

Collection: LOUNGE UV

Specification:

3-layer Eoak parquet,

UV lacquered,

Dimension:

15 x 1000/ 1900 / 190 mm

NATURALE



MIELE



BIANCO



GRIGIO



FARINA



**Door handle**

Manufacturer: HOPPE

Model: Stockholm or Houston



**Light switch and socket**

Manufacturer: GIRA

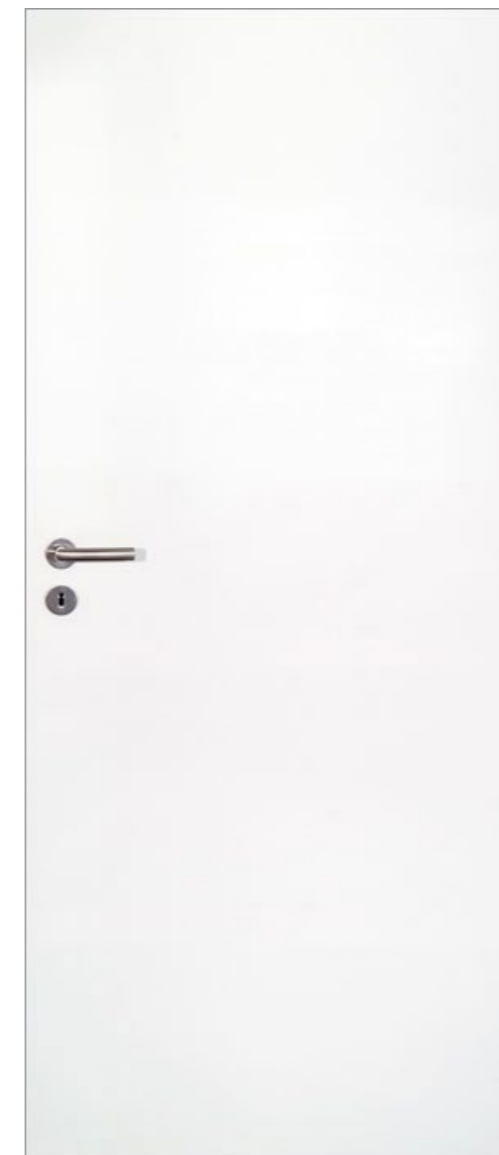
Model: GIRA E2



**Skirting boards**

Description: MDF white lacquered

Dimension: approx. 80 x 19 mm



**Doors**

Description: OPTIMA 34 modern design  
white lacquered

#### Confidentiality

This exposé, and the information contained in it, is only intended for the addressed receiver named by us. The exposé, and the information contained in it, is to be treated with confidentiality and may only be made available to third parties with our express permission. We expressly reserve the right to claim for damages in the event of a breach of confidentiality.

#### Copyright

These texts and images are protected by copyright. Their use, either complete or partial, is not permitted without express written consent.

#### Exclusion of Liability

All information contained in this brochure reflects the current stage of planning at the time of printing and is not binding. Floor plans, drawings, fittings and features are based on data that may be altered and changed at a later stage of planning.

All images are artist's impressions. The furniture pictures does not constitute part of the fittings and fixtures and is intended only as inspiration as to what the final interior design could look like. Floor plans are not true to scale and all areas stated are approximate values. We cannot accept any liability for the completeness of the information provided.

While all documentation were compiled with the utmost care, we cannot guarantee that it is free from errors. Only the notarized documents shall be binding with respect to the final implementation. The seller reserves the right to make amendments to the building specifications/construction that do not reduce the value in any way. In the event of any amendments, we aim to provide equivalent value construction or replacement of equivalent quality.

Brochure last updated: May 2018.

#### Sales

##### Project Management

DCASA REAL ESTATE GmbH  
Wolliner Strasse 5, 10435 Berlin  
10119 Berlin

#### Office

Wolliner Strasse 5, 10435 Berlin  
Telefon: +49-30-484 928-20  
Telefax: +49-30-484 928-21  
E-Mail: [vertrieb@dcasa.de](mailto:vertrieb@dcasa.de)  
Internet: [www.dcasa.de](http://www.dcasa.de)

**Managing Director:** Gianmaria Condulmari

**Registernummer:** HRB 137640, AG Berlin Charlottenburg  
Gewerbeurlaubnis, § 34c GewO erteilt vom Bezirksamt  
Mitte von Berlin

#### Consumer Information

Online-Streitbeilegung gemäß Art. 14 Abs. 1 ODR-VO:  
Die Europäische Kommission stellt eine Plattform zur  
Online-Streitbeilegung (OS) bereit, die Sie hier finden:  
<http://ec.europa.eu/consumers/odr>

#### Developer

AMLT POT72 Residences GmbH  
Weinbergsweg 24, 10119 Berlin  
Ein Unternehmen der AMLT Gruppe  
[www.amlt.de](http://www.amlt.de)

#### Architects

Paolini e Storchi Architetti Associati  
Stefano Paolini, Maurizio Storchi  
00152 Roma, Via Francesco Saverio Sprovieri 17

**Design:** diegeisel

**Texts:** [www.textbroker.de](http://www.textbroker.de)

**Illustrations, Photos:**

Dirk-Martin Heinzelmann, [www.photheus.eu](http://www.photheus.eu)

**Renderings:** [www.3drenderandbeyond.com](http://www.3drenderandbeyond.com)

DCASA REAL ESTATE GmbH

Wolliner Strasse 5, 10435 Berlin

International clients please call:

+49 163 25 11 055

+49 304 84 92 820

Contact us via email:

[sales@dcasa.de](mailto:sales@dcasa.de)

[www.potsdamer72.com](http://www.potsdamer72.com)



A M L T



A M L T

DCASA